

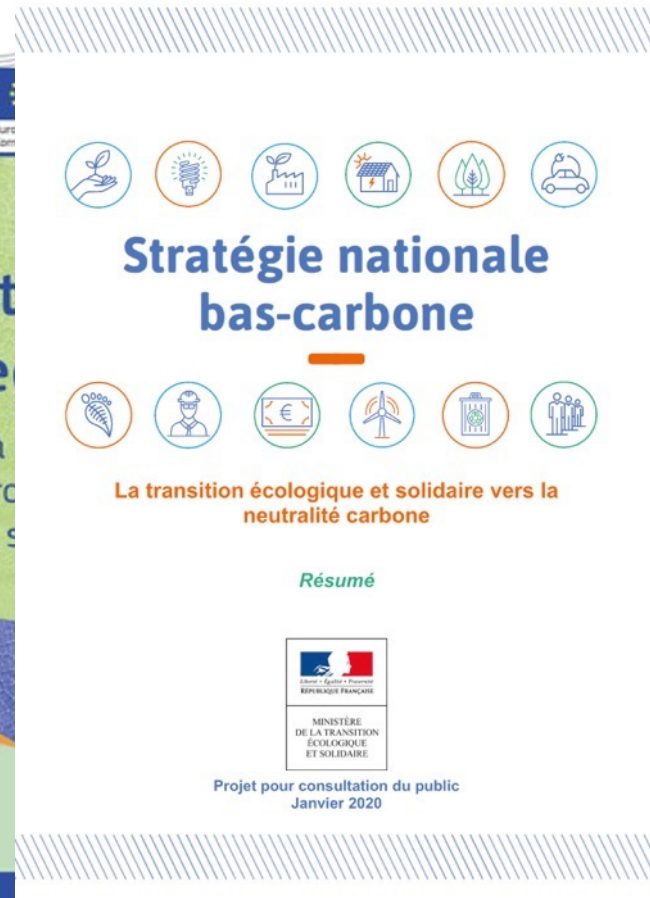
The role of modelling to support the road to a just transition in the EU

The case of the F2F & BDS strategies

September 20th 2021, EEAC-IEEP joint webinar

Pierre-Marie Aubert, Lead, European Agriculture Initiative

A clear overall direction of travel



... but a lot of policy / political questions

MEP: CAP is about farmers' livelihood too, not only sustainability

By Gerardo Fortuna | EURACTIV.com

21 oct. 2020



Italian MEP Herbert Dorfmann addressing the plenary. [DIEFFEMBAQ-EP]

Supporter



"Funded by the IMCAP Programme of the European Union"

The content of this page and articles represents the views of the author only and is his/her sole responsibility. The European Commission does not accept any responsibility for use that may be made of the information it contains.

- the first manufacturing industry in the EU, leading in terms of turnover (15.6%), value added (13%) and employment (15.2%)

€1,090 billion
turnover

€212 billion
value added

4.25 million people
direct employment

285,000 SMEs account for:

49.4%
of food and drink
turnover

48.1%
of food and drink
value added

62.8%
of food and drink
employment

99% of food and drink companies are SMEs

... fuelled by the limitations of modelling tools, and the strategic use of their results



United States Department of Agriculture

Economic
Research
Service

Economic
Brief
Number 30

November 2020

Economic and Food Security Impacts of Agricultural Input Reduction Under the European Union Green Deal's Farm to Fork and Biodiversity Strategies

Jayson Beckman, Maros Ivanic, Jeremy L. Jelliffe, Felix G. Baquedano, and Sara G. Scott



IDDRI



European
Commission

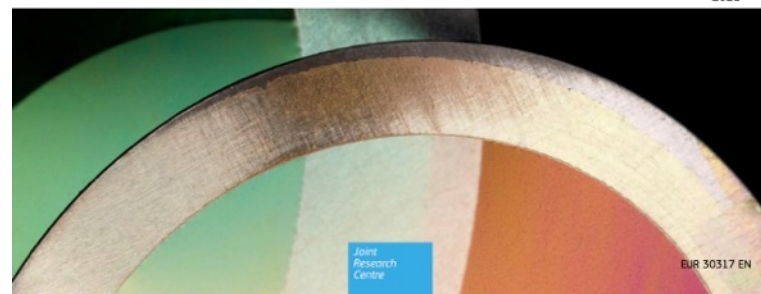
JRC TECHNICAL REPORT

Modelling environmental and climate ambition in the agricultural sector with the CAPRI model

Exploring the potential effects of selected Farm to Fork and Biodiversity strategies targets in the framework of the 2030 Climate targets and the post 2020 Common Agricultural Policy

Jesus Barreiro-Hurlé, Mariia Bogonos, Mihaly Himics, Jordan Hristov, Ignacio Pérez-Domínguez, Amar Sahoo, Guna Salputra, Franz Weiss, Edoardo Baldoni, Christian Elleby

2021

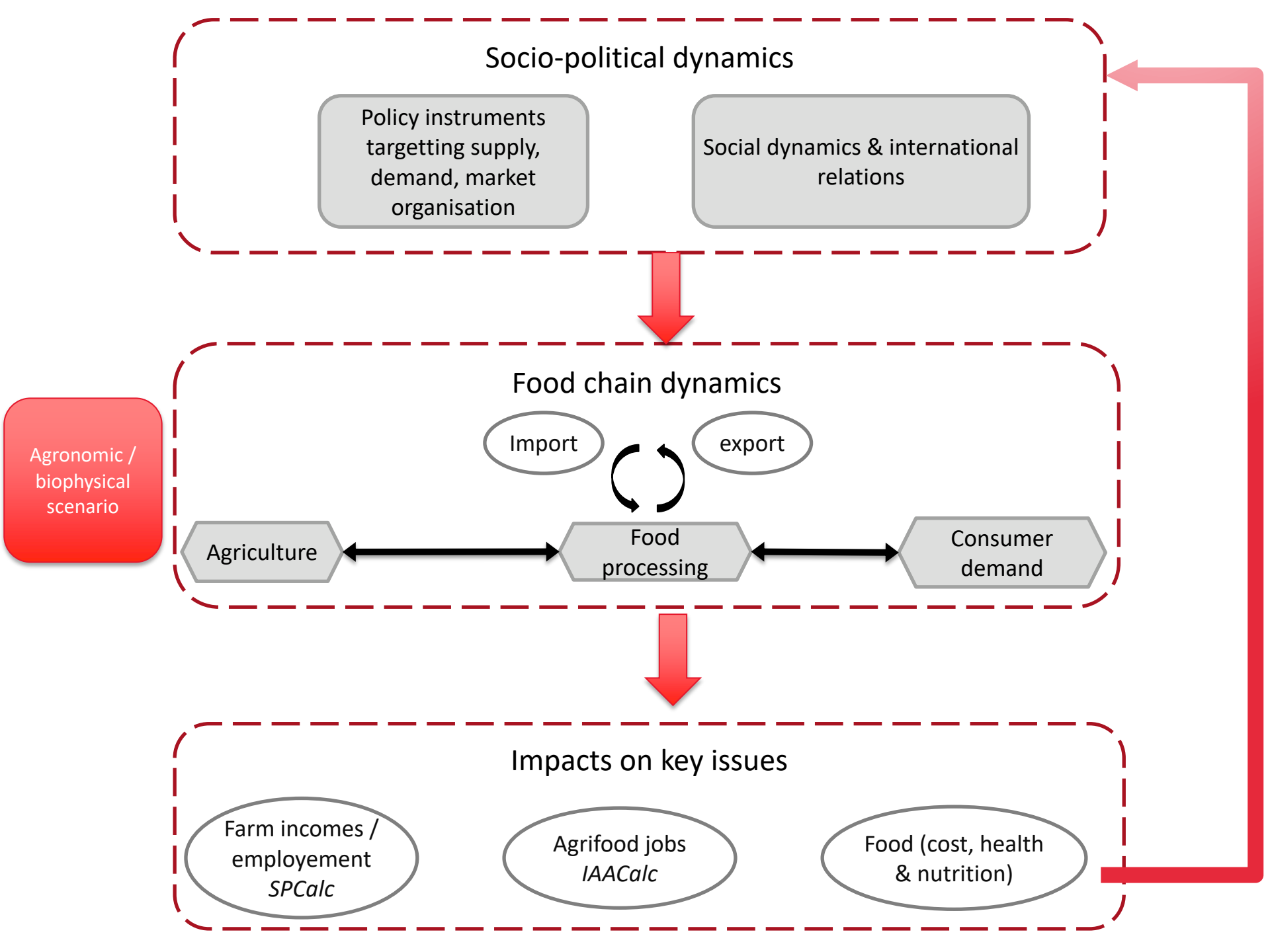


Joint
Research
Centre

EUR 30317 EN

Two major requirements

- (1) Developing modelling tools better adapted to address just transition questions
 - Biophysical models: robust, but unable to consider socio-economic issues
 - Economic, supply-demand equilibrium models (CAPRI, MAGNET, AgLink COSIMO...): unable to apprehend **structural transformations** of food systems
 - Input-Output models: probably better placed, but little convincing so far
- Farms, processing industries, consumer behaviours... will be structurally different by 2030 and even more by 2050
- => the need to **couple both dynamics** and to link the functioning of food value chains to the impacts we want to apprehend



Socio-political dynamics

Policy instruments
targetting supply,
demand, market
organisation

Social dynamics & international
relations

Food chain dynamics

Import

export

Agriculture

Food
processing

Consumer
demand

Impacts on key issues

Farm incomes /
employment
SPCalc

Agrifood jobs
IAACalc

Food (cost, health
& nutrition)

Agronomic /
biophysical
scenario

Capture d'écran

WEBINAR

A just transition to align the EU food system with the Green Deal: challenges and policy levers for France

Wednesday, May 26
02:00-04:00 pm CEST



 **IDDRI in English**
@IDDRI_English

#GreenDeal #EU #FoodSystems

[WEBINAR]
A work recently developed by IDDRI will be presented & discussed with high-level key actors: [@EmmanuelFaber](#), [@ChLambert_FNSEA](#), [@janplagge](#), Jan Plagge [@OrganicsEurope](#)

 26/05, 2pm

 [us02web.zoom.us/webinar/register...](https://us02web.zoom.us/webinar/register)

7:35 PM · May 17, 2021 · Twitter Web App

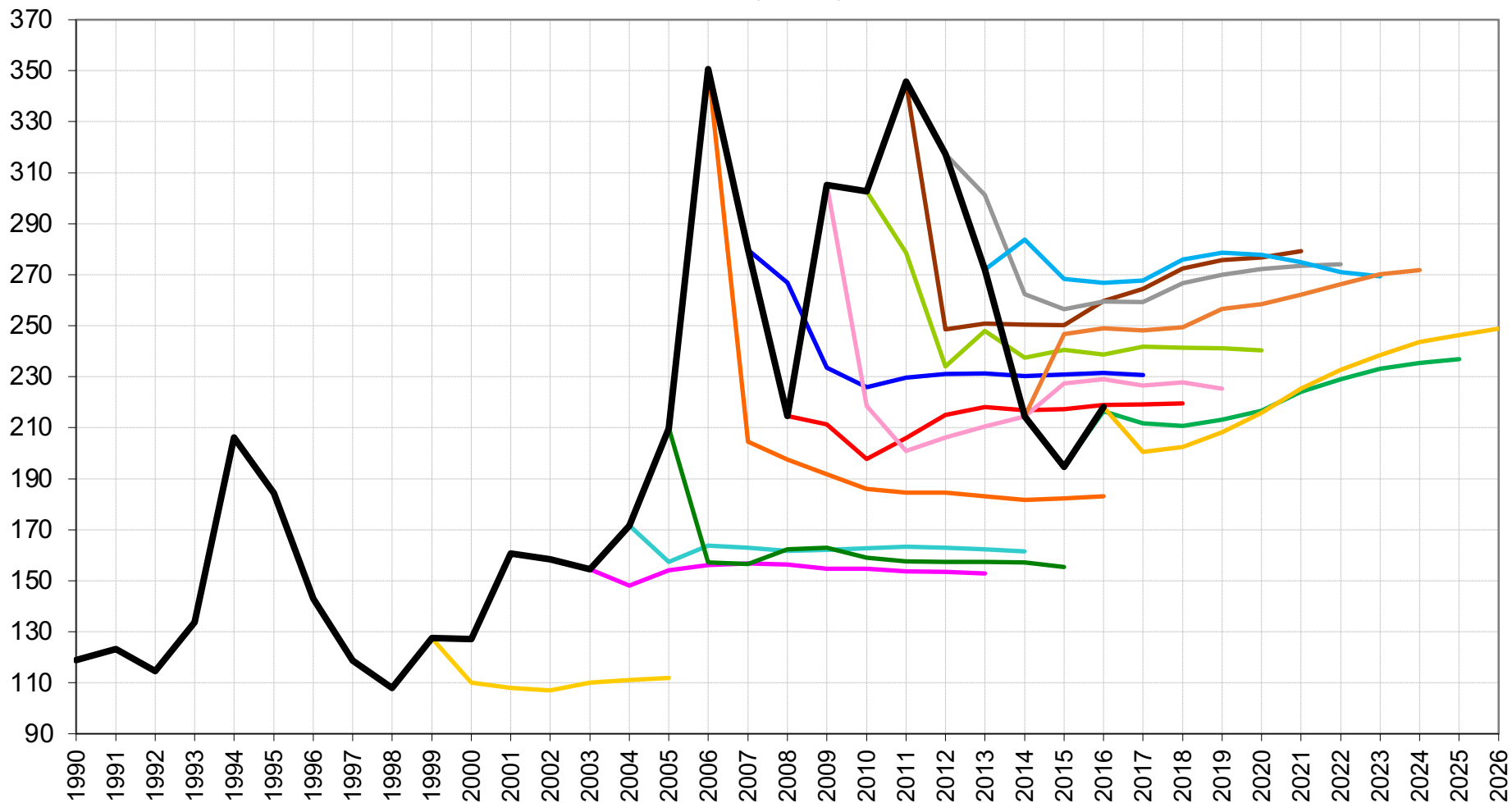
9 Retweets 1 Quote Tweet 9 Likes

Two major requirements

- (1) Developing modelling tools better adapted to address just transition questions
 - Biophysical models: robust, but unable to consider socio-economic issues
 - Economic, supply-demand equilibrium models (CAPRI, MAGNET, AgLink COSIMO...): unable to apprehend **structural transformations** of food systems
 - Input-Output models: probably better placed, but little convincing so far
- Farms, processing industries, consumer behaviours... will be structurally different by 2030 and even more by 2050
- => the need to couple both dynamics and to link the functioning of food value chains to the impacts we want to apprehend
- (2) Not to await everything from models, but use them to **explore options** and **trigger policy discussions**, involving all stakeholders

PROJECTIONS OUTLOOK AGLINK (OCDE)
prix mondial du blé (\$/tonne)



Two major requirements

- (1) Developing modelling tools better adapted to address just transition questions
 - Biophysical models: robust, but unable to consider socio-economic issues
 - Economic, supply-demand equilibrium models (CAPRI, MAGNET, AgLink COSIMO...): unable to apprehend **structural transformations** of food systems
 - Input-Output models: probably better placed, but little convincing so far
- Farms, processing industries, consumer behaviours... will be structurally different by 2030 and even more by 2050
- => the need to couple both dynamics and to link the functioning of food value chains to the impacts we want to apprehend
- (2) Not to await everything from models, but use them to **explore options** and **trigger policy discussions**, involving all stakeholders
- => **multi-level dialogues** rather than “ready-to-implement” solutions, looking at **pathways** rather than only “final picture”



CONTACT

Pierre-Marie Aubert (IDDRI) – pierremarie.aubert@iddri.org

IDDRI.ORG